

定位销 DCP63.1 Locator device DCP63.1

主要特点:

- 紧凑型设计
- 定位精度高
- 铝制壳体
- 4 种安装面 (前后左右)
- 钢制导套
- 活塞杆行程: 20, 40, 60 mm
- 气缸缸径: 63 mm
- 2 个 G1/4"气源接口
- P+F 电感式接近开关 (M12x1 接口)



Main characteristics:

- Compact design
- High accuracy of positioning
- Aluminum body
- 4 mounting areas (up, front and sides);
- Grinding steel guiding bush
- Rod stroke: 20, 40, 60 mm
- Pneumatic cylinder bore: 63 mm
- 2 feeding ports G1/4"
- Inductive proximity switch P+F (connection M12x1)



[PDF](#)



[3D Step](#)



[Index](#)

索引.

Index.

页码 Page	描述 Description	
1	主要特点 Main characteristics	
2	订货举例 Ordering example	
3	尺寸页码 Dimensional page	DCP63.1...
4		DCP63.1...M...
5 - 6	活塞杆类型 / Rods type	
6	电感式接近开关图表 Diagram for inductive proximity switch	
7	气路图 / Pneumatic plan	
7	特性 / Properties	
7	备件 / Spare parts	
8	备注 / Notes	



订货举例.

Ordering example.

DCP63.1 - BN - 40 - I - 03 - LA


型号和气缸缸径:
Type and cylinder bore:

DCP63.1
定位单元
气缸缸径 63 mm
locator with pneumatic cylinder bore 63 mm

DCP63.1K
定位单元
气缸缸径 63 mm
轴向扭矩加强
locator with pneumatic cylinder bore 63 mm reinforced for axial torque

DCP63.1M
定位单元
气缸缸径 63 mm
带手动控制机构
locator with pneumatic cylinder bore 63 mm and hand lever

DCP63.1KM
定位单元
气缸缸径 63 mm
轴向扭矩加强
带手动控制机构
locator with pneumatic cylinder bore 63 mm reinforced for axial torque and hand lever



接近开关:
Proximity switch:

X: 无接近开关
without proximity switch

I: P+F 电感式接近开关
inductive proximity switch P+F

行程:
Stroke:

20	20 mm
40	40 mm
60	60 mm

活塞杆类型 (参见 第 5-6 页):
Rod type (see pag. 05-06):


AN: 氮化活塞杆 孔径 Ø10H7 十字头杆端
nitrided rod with Ø10H7 hole and cross-profiled end

BN: 氮化活塞杆 孔径 Ø16H7 十字头杆端
nitrided rod with Ø16H7 hole and cross-profiled end

CN: 氮化活塞杆 孔径 Ø16H7 扁平头杆端
nitrided rod with Ø16H7 hole and flat end

DN: 氮化活塞杆 孔径 Ø10H7 扁平头杆端
nitrided rod with Ø10H7 hole and flat end

SPN: 扁平氮化活塞杆
nitrided plate rod



手柄位置:
仅适用于 DCP63M e DCP63KM
Hand lever position:
(specify only for DCP63M and DCP63KM)

LA: 手柄在后面
back lever

LB: 手柄在前面
front lever

SP 型活塞杆位置 (参见第 6 页):
SP rod position (see page 06):

03	06	09	12
-----------	-----------	-----------	-----------

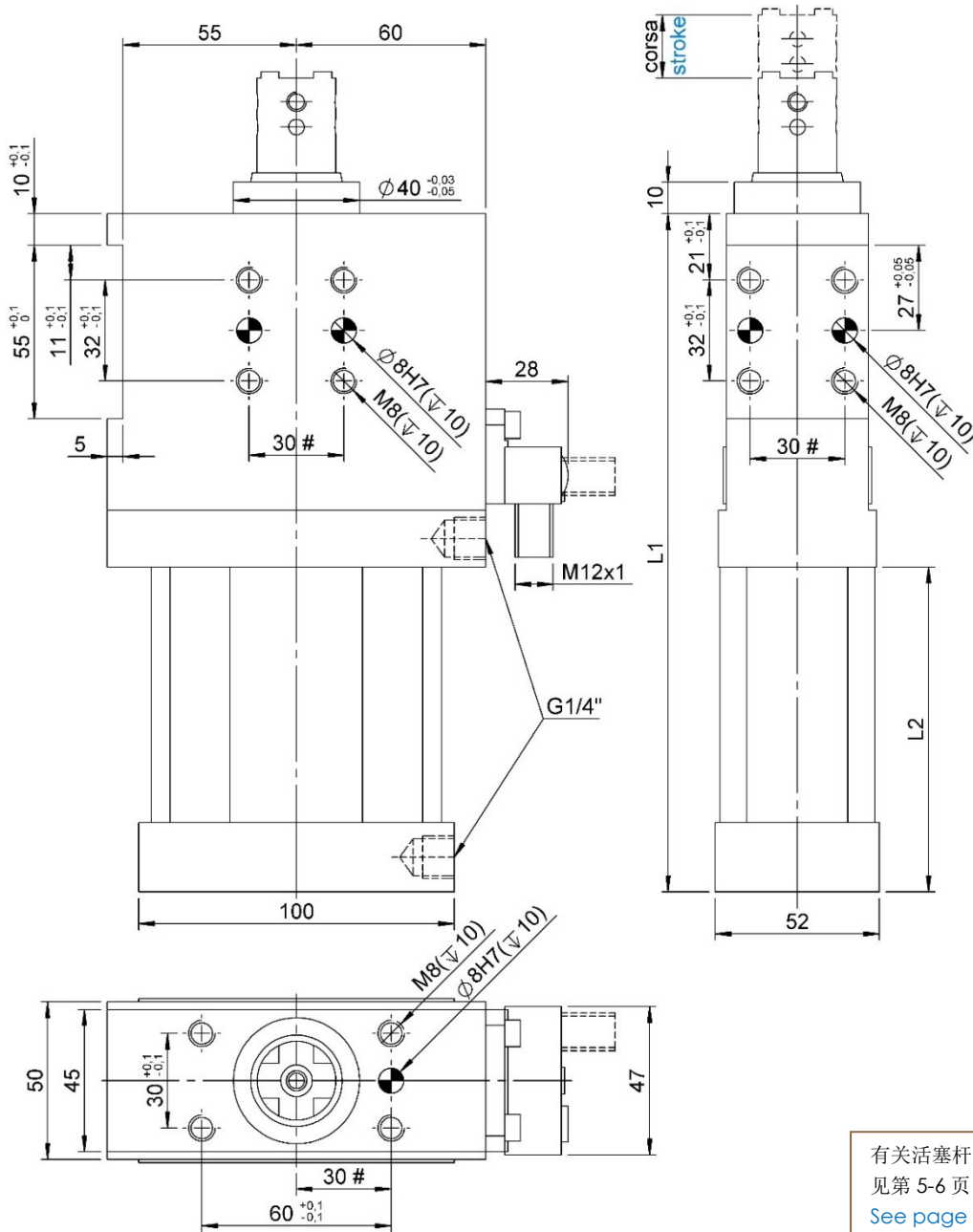
备注: 仅针对带 **SPN 型** 活塞杆的定位销。
NOTE: specify only for locators with SPN rod



DCP63.1...

定位销, D. 63, 行程 20/40/60 mm

Locator device, D. 63, stroke 20/40/60 mm



有关活塞杆尺寸特性请参见第 5-6 页
See page 5-6 for the dimensional properties of the rods.

#公差: 定位销孔 ± 0.02 , f 螺纹孔 ± 0.1
#Tolerances: dowel holes ± 0.02 , screw holes ± 0.1

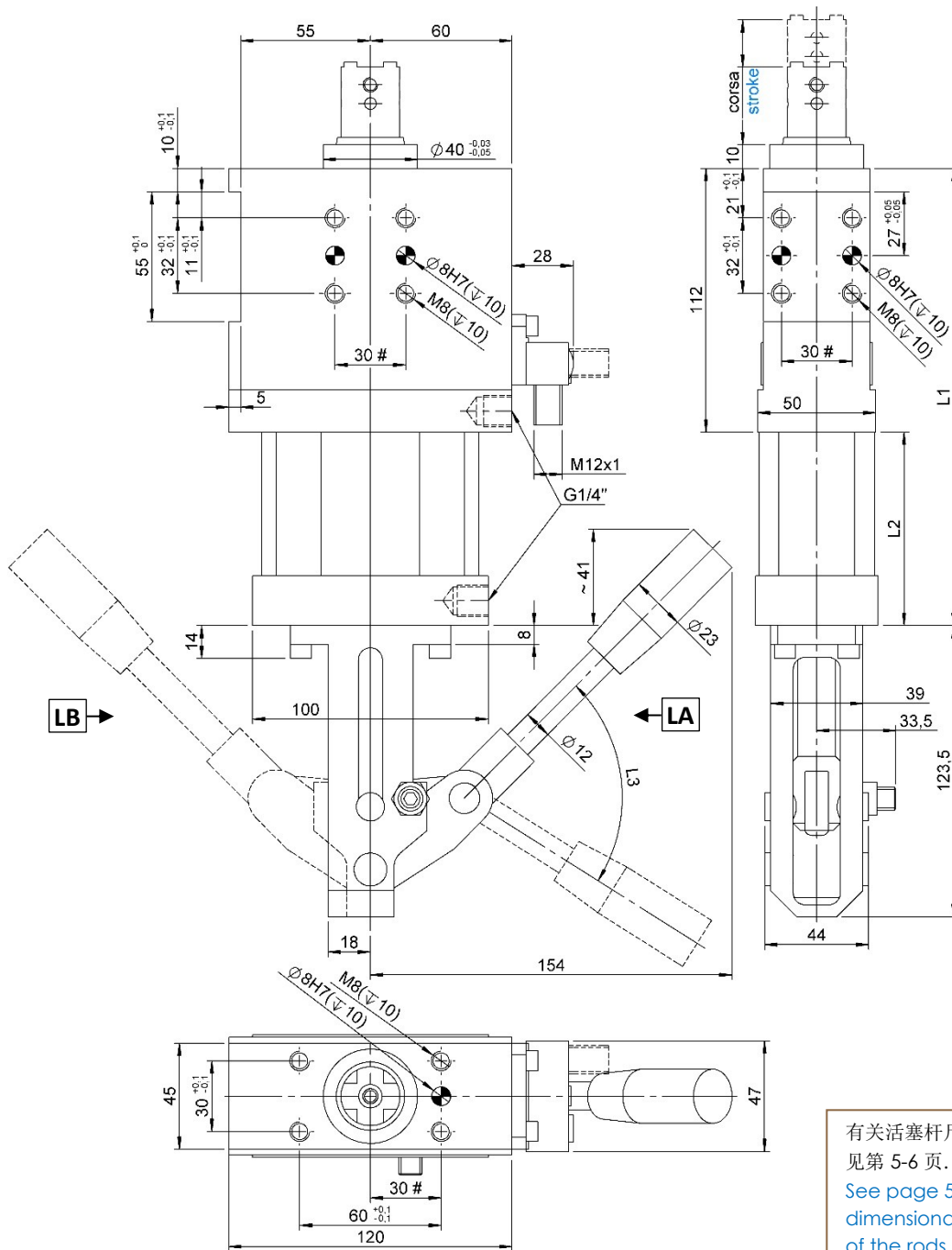
类型 Type	气缸缸径 Cylinder bore	活塞杆行程 Rod stroke	L1	L2	重量 Weight	耗气量(5 bar) Air consumption (5 bar)
	[mm]	[mm]	[mm]	[mm]	[Kg]	[l]
DCP63.1...-20I	63	20	195	83	~ 2,8	~ 0,75
DCP63.1K...-20I					~ 2,9	
DCP63.1...-40I		40	215	103	~ 2,9	~ 1,45
DCP63.1K...-40I					~ 3,0	
DCP63.1...-60I		60	235	123	~ 3,0	~ 2,20
DCP63.1K...-60I					~ 3,1	



DCP63.1...M...

定位销, D. 63, 带手动机构, 行程 20/40/60 mm

Locator device, D. 63, hand lever, stroke 20/40/60 mm



#公差: 定位销孔 ± 0.02 , 螺纹孔 ± 0.1

#Tolerances: dowel holes ± 0.02 , screw holes ± 0.1

有关活塞杆尺寸特性请参见第 5-6 页。

See page 5-6 for the dimensional properties of the rods.

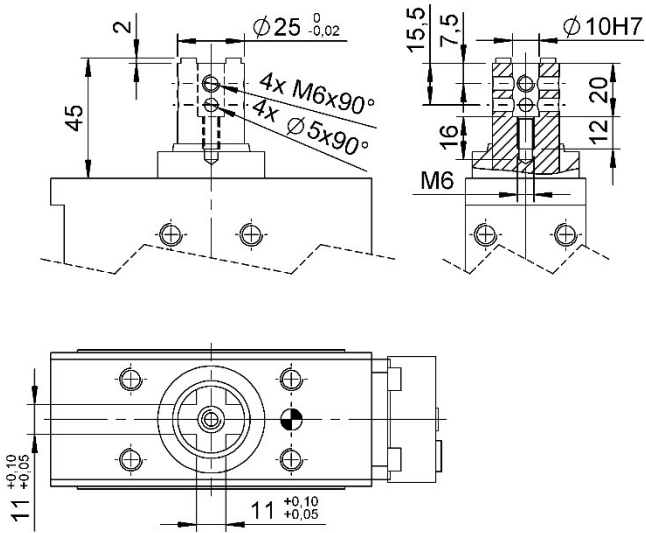
类型 Type	气缸缸径 Cylinder bore	活塞杆行程 Rod stroke	L1	L2	L3	重量 Weight	耗气量(5 bar) Air consumption (5 bar)	
	[mm]	[mm]	[mm]	[mm]	[°]	[Kg]	[l]	
DCP63.1M...-20I-L...	40	20	194	82	26	~ 4,0	~ 0,70	
DCP63.1KM...-20I-L...		40	214	102	47	~ 4,1	~ 1,40	
DCP63.1M...-40I-L...		40	40	214	102	47	~ 4,2	~ 1,40
DCP63.1KM...-40I-L...		40	40	214	102	47	~ 4,2	~ 1,40
DCP63.1M...-60I-L...		40	60	234	122	78	~ 4,2	~ 2,10
DCP63.1KM...-60I-L...		40	60	234	122	78	~ 4,3	~ 2,10



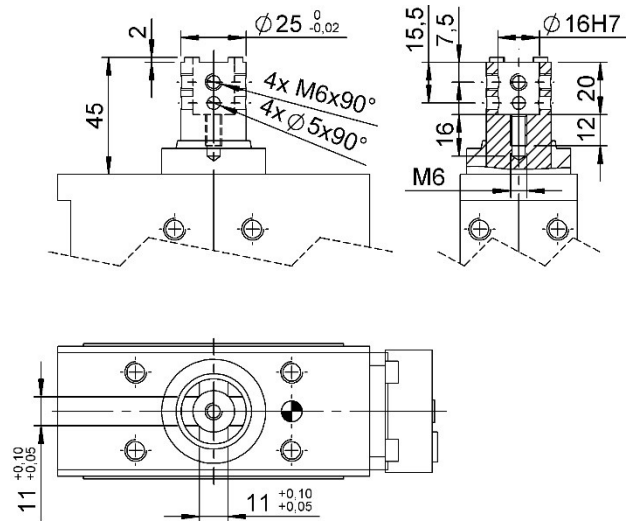
活塞杆类型

Types of rods

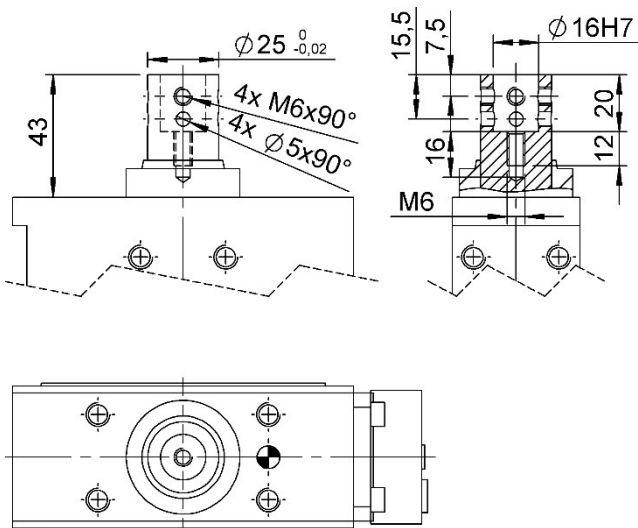
杠型 **AN**
Type **AN**



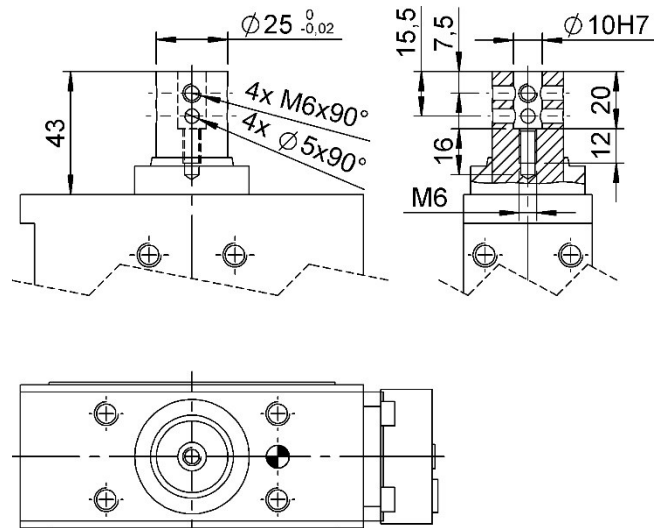
杠型 **BN**
Type **BN**



杠型 **CN**
Type **CN**



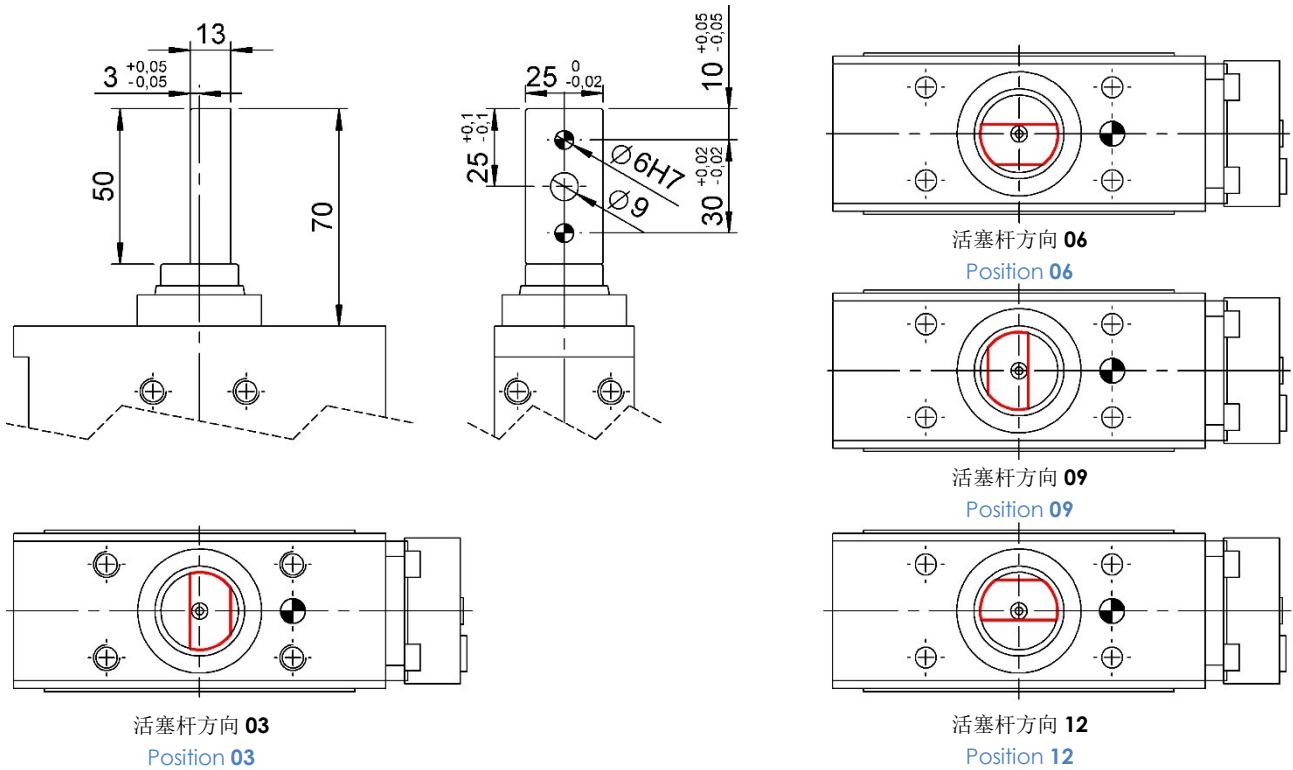
杠型 **DN**
Type **DN**





杠型 SPN

Type SPN



电感式接近开关原理图 (06706/行程/C).

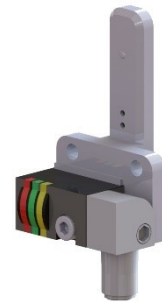
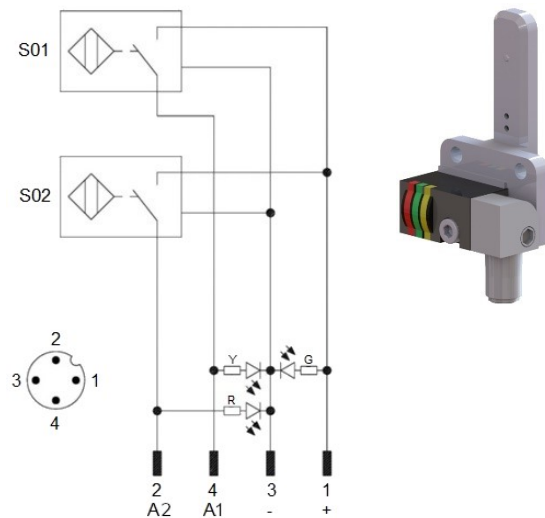
Diagram for Inductive proximity switch (06706/stroke/C).

(P+F) 技术参数:

- 输出类型: PNP;
- 输入电压: 10-30 VDC;
- 最大换向电源: 200 mA;
- 消耗电流: < 25 mA;
- 电压差: < 2 V
- 温度范围: -25° / 70° C.

Technical data (P+F):

- Output type: PNP;
- Feeding voltage: 10-30 VDC;
- Max. commutating current: 200 mA;
- Power supply: < 25 mA;
- Voltage drop: < 2 V;
- Temperature range: -25° / 70° C.



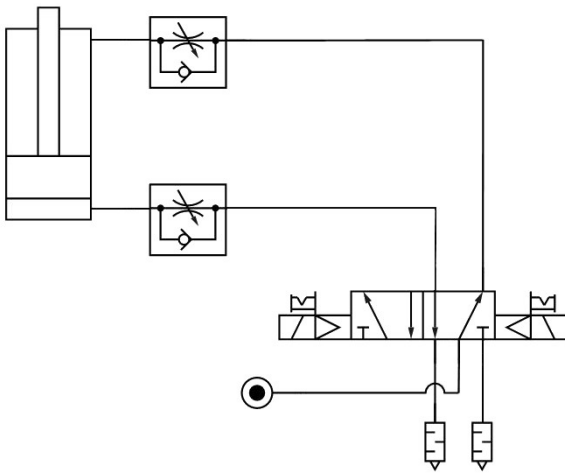
S01 = 打开信号
S01 = opening signal
S02 = 夹紧信号
S02 = closing signal

Y = 黄色 LED / yellow LED
G = 绿色 LED / green LED
R = 红色 LED / red LED

1 = 棕色线 / brown wire
2 = 黑色线 / black wire
3 = 蓝色线 / blue wire
4 = 白色线 / white wire

气路图

Pneumatic plant.



类型 Type	耗气量 Air consumption (5 bar)	耗气量 Air consumption (6 bar)	工作气压 Working pressure
	[l]	[l]	[bar]
DCP63.1...-20I	~ 0,75	~ 0,90	2 – 8
DCP63.1K...-20I			
DCP63.1...-40I	~ 1,45	~ 1,75	
DCP63.1K...-40I			
DCP63.1...-60I	~ 2,20	~ 2,65	
DCP63.1K...-60I			
DCP63.1M...-20I-L...	~ 0,70	~ 0,85	
DCP63.1KM...-20I-L...			
DCP63.1M...-40I-L...	~ 1,40	~ 1,70	
DCP63.1KM...-40I-L...			
DCP63.1M...-60I-L...	~ 2,10	~ 2,55	
DCP63.1KM...-60I-L...			

特性.

Properties.

类型 Type	推压力 Pressing force (5 bar)	牵引力 Tensile force (5 bar)	最大静态径向力 Static side force max.	最大扭矩力. Max. torque	最大角度扭矩力 Torsion angle max.
	[N]	[N]	[N]	[Nm]	[°]
DCP63.1...	1500	1400	200	4	± 0,1°
DCP63.1K...				6	± 0,1°

备件.

Spare parts.

配套元件 # Kit	图片 Picture	描述 Description	代号 Article
接近开关 Proximity switch		P+F 电感式接近开关 Inductive proximity switch P+F	06706/行程/C 06706/stroke/C
密封套装 Seals kit		气缸密封组件适用于 DCP63.1 / DCP63.1K Pneumatic cylinder seals for DCP63.1 / DCP63.1K	SCR-DCP63.1
		气缸密封组件适用于 DCP63.1M / DCP63.1MK Pneumatic cylinder seals for DCP63.1M / DCP63.1MK	SCR-DCP63.1M



本目录取消并替换了以前的目录。我们保留在没有任何通知的情况下进行添加或更改的权利。目录中的产品为标准产品；对特殊应用的任何请求都由技术/商务部门进行评估。本目录文档均属 VEP Automation S.r.l. 所有。未经授权许可，禁止任何形式的复制。

This catalogue cancels and replaces the previous ones. We reserve the right to make additions or changes without any notice. The products in the catalogue are standard; any enquiry of special applications is evaluated by technical/sales department. The complete documentation belongs to VEP Automation S.r.l. and without permission any kind of reproduction is forbidden.

VEP Automation Headquarters

VEP Automation S.r.l

Via San Felice, 37
10092 Beinasco – Torino (Italy)
Tel. +39 011 3972572
Email: info@vepautomation.it
Web: www.vepautomation.it

VEP Automation Germany

VEP Automation GmbH

Fritz Liebsch Str. 29
D 26723 Emden (Germany)
Tel. +49 04921 450758
Email: info@vepautomation.de
Web: www.vepautomation.de

VEP Automation America

VEP Automation S.A.

Av. Toluca 373 M Col. Olivar de los
Padres Del. Álvaro Obregón
01780 CDMX – (Ciudad de México)
Tel. +52 55 1718 0929
Email: info@vepautomation.mx
Web: www.vepautomation.mx

VEP Automation China

维亿普自动化（苏州）有限公司

地址：中国江苏省苏州市吴中区木渎镇
木东路 317 号（联东 U 谷）1 幢 401 室
Room 401, Building No 1, No 317, mudong Road,
Wuzhong, mudu District, Suzhou City (China)
电话: +86 512 6729 2226
邮箱: info@vepautomation.cn
网址: www.vepautomation.cn